

# WELLINGTON PILOTAGE: WAYPOINTS

(BASED ON WGS 84 DATUM)

**NOTE:** The following waypoints may be used for setting tracks on the GPS equipment or ECDIS, CentrePort takes no responsibility for the accuracy of this data

## PILOT STATIONS

"A"	41 23.89' S 174 49.47' E	Pilot Station "Alpha"
"B"	41 23.93' S 174 50.12' E	Pilot Station "Bravo"
"C"	41 23.57' S 174 48.24' E	Pilot Station "Charlie"

## INWARDS TO CITY WHARVES

"A"	41 23.89' S 174 49.47' E	steer 016.5	Pilot Station "Alpha"
"D"	41 19.56' S 174 51.16' E	steer 005	Abeam Steeple
"E"	41 17.00' S 174 51.46' E	steer 315	Transit Halswell/Jerningham.
"F"	41 16.31' S 174 50.53' E	various	Abeam Halswell

## INWARDS TO SEAVIEW WHARF

"A"	41 23.89' S 174 49.47' E	steer 016.5	Pilot Station "Alpha"
"D"	41 19.56' S 174 51.16' E	steer 005	Abeam Steeple
"E"	41 17.00' S 174 51.46' E	steer 060	Transit Halswell/Jerningham.
"T"	41 16.00' S 174 53.72' E	various	

## OUTWARDS FROM CITY WHARVES

		various	From Inner harbour
"G"	41 16.545' S 174 49.575' E	steer 126	North of Halswell
"H"	41 17.22' S 174 50.83' E	steer 168	To pass East of Falcon Shoal
"I"	41 18.26' S 174 51.12' E	steer 182	Abeam Falcon Shoal Lt.
"J"	41 19.70' S 174 51.04' E	steer 197	Off Steeple Lt.
"K"	41 21.22' S 174 50.42' E	steer 205	Abeam Barrett Buoy

## OUTWARDS FROM SEAVIEW WHARF

		various	from berth
"W"	41 15.50' S 174 53.28' E	steer 230	Off Seaview Wharf
"M"	41 17.09' S 174 50.78' E	steer 168	East of Falcon Shoal
"I"	41 18.26' S 174 51.11' E	steer 182	Abeam Falcon Shoal
"J"	41 19.70' S 174 51.04' E	steer 197	Of Steeple Lt.
"K"	41 21.22' S 174 50.41' E	steer 205	Abeam Barrett Buoy

## INWARDS TO BURNHAM WHARF

"A"	41 23.89' S 174 49.47' E	steer 016.5	Pilot Station "Alpha"
"D"	41 19.56' S 174 51.16' E	steer 005	Abeam Steeple
"E"	41 17.00' S 174 51.46' E	steer 315	Transit Halswell/Jerningham.
"F"	41 16.31' S 174 50.53' E	steer 264	Abeam Halswell
"N"	41 16.735' S 174 48.75' E	steer 182	Course for Evans Bay
"S"	41 18.00' S 174 48.69' E	various	Approach Burnham Wharf
"U"	41 18.70' S 174 48.69' E		Burnham Wharf

### SEAVIEW / BURNHAM SHIFT

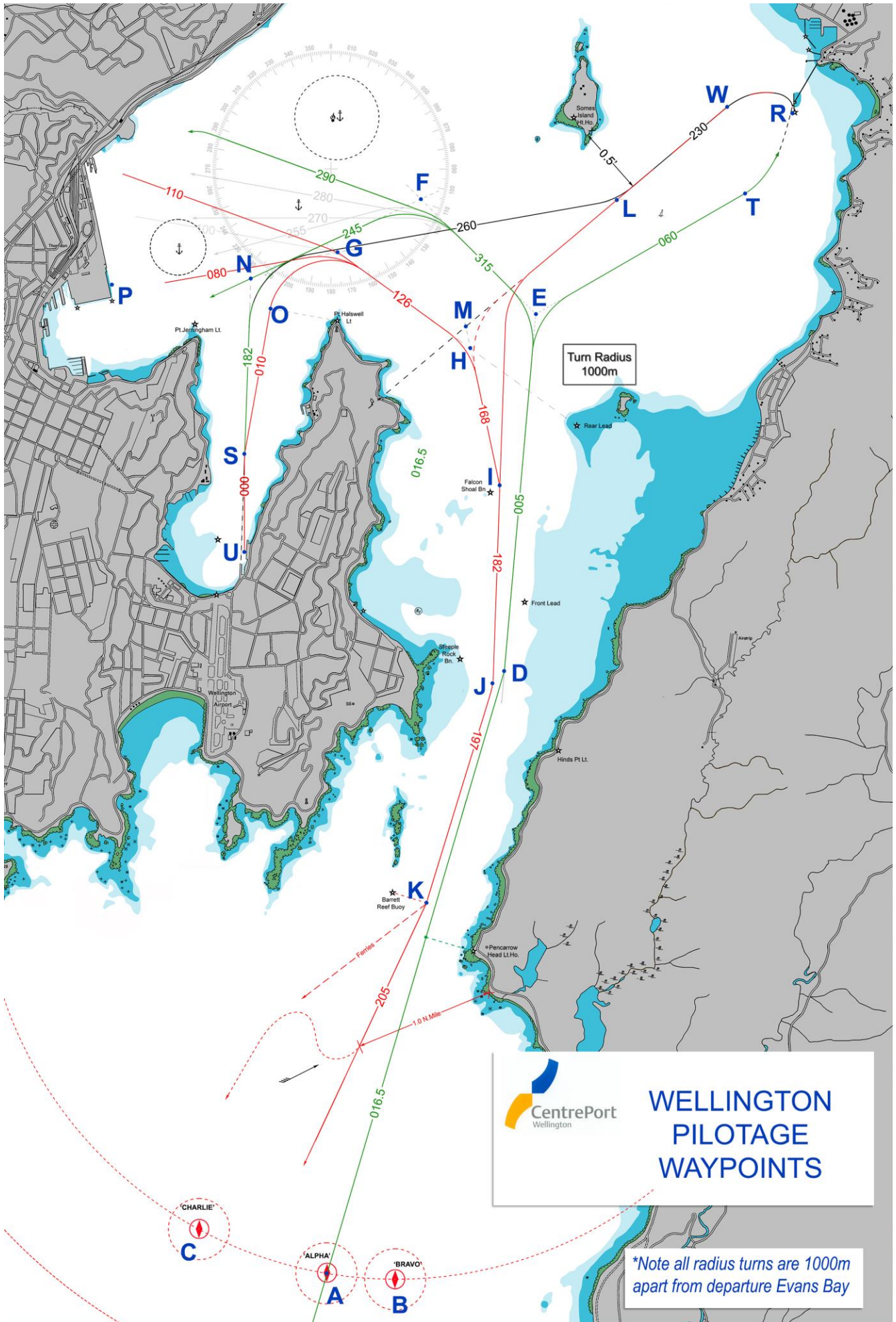
"R"	41 15.50' S 174 53.90' E	various	Posn. Seaview Wharf
"W"	41 15.50' S 174 53.28' E	steer 230	Departure Posn. off Seaview
"L"	41 16.17' S 174 52.23' E	steer 264	Posn. South of Somes Is.
"N"	41 16.44' S 174 48.85' E	steer 182	Course for Evans Bay
"S"	41 18.00' S 174 48.69' E	various	Approach Posn. Burnham Wharf
"U"	41 18.70' S 174 48.69' E		Burnham Wharf

### OUTWARDS FROM BURNHAM WHARF

"U"	41 18.70' S 174 48.69' E	steer 000	Burnham Wharf
"S"	41 18.00' S 174 48.69' E	steer 010	Centre Evans Bay
"O"	41 16.95' S 174 48.935' E	various	Posn to turn out of E. Bay
"G"	41 16.54' S 174 49.57' E	steer 126	Posn. N. of Halswell (optional)
"H"	41 17.22' S 174 50.82' E	steer 168	To pass East of Falcon Shoal
"I"	41 18.26' S 174 51.11' E	steer 182	Posn. Abeam Falcon Shoal
"J"	41 19.70' S 174 51.04' E	steer 197	Posn. Of Steeple Lt
"K"	41 21.22' S 174 50.41' E	steer 205	Posn. Abeam Barrett Buoy

### ANCHORAGES

1	41 16.25 S 174 48.09 E	Inner Anchorage
2	41 16.04 S 174 48.67 E	Outer Anchorage
3	41 15.78 S 174 49.03 E	Outer Anchorage
4	41 15.50 S 174 50.00 E	Explosives Anchorage
5	41 16.52 S 174 48.07 E	Quarantine Anchorage
6	41 15.95 S 174 53.00 E	Tanker Waiting Anchorage




**WELLINGTON  
PILOTAGE  
WAYPOINTS**

*\*Note all radius turns are 1000m apart from departure Evans Bay*